



We send our newsletter to interested cemeterians by e-mail only. If you would like to be added or removed from our list, please let us know.

All clients will continue to receive our newsletter by e-mail or first class mail.

1-800-332-7532 or
cims@ramaker.com

Please contact us with any e-mail or address changes.

Visit us on
the web!



www.1cims.com
or
www.cimscemeterysoftware.com

Inside this issue:

Featured Cemetery	2
Underground Mapping	2
Road Trips	3
Upcoming Shows	3
Client Referrals	3
Weather	3
Software Tips	4
Maintenance Program	4
Staff Profile	4
New Clients	4

Third Annual CIMS User Group Meeting

The next CIMS User Group Meeting will be held this fall on **Thursday, October 2, 2008, from 9:00 am – 4:30 pm**. The meeting will be held at the Kalahari Resort in Wisconsin Dells, WI (www.kalahariresort.com). Special room rates of \$99 will be available for the nights of October 1st and/or 2nd. Please call Kalahari reservations at 1-877-253-5466 and ask for the Ramaker room block. **Hotel reservations must be made before September 1, 2008, to guarantee this rate.**

We will also again be offering training

sessions for new users who need a little more basic training.



Two sessions will be offered at the Ramaker & Associates office in Sauk City; one on Wednesday afternoon, October 1st and the other on Friday morning, October 3rd. Space is limited for the training sessions and will be based on the date registration is received. Attached is the registration form with more details. See you in October!

CIMS & WINDOWS VISTA

By: Curtis Paul

So what does this all mean for you and your CIMS software?

For CIMS, it means a simple change of location. For Vista CIMS installs, the C:\Program Files\CIMS\ location should no longer be used. Instead, CIMS and CIMS *Light* will now be installed to the C:\Users\Public\Ramaker\directory. To ease the process of installing CIMS, your install CD will automatically decide the correct install path for you.

For you personally, it means getting acclimated to a new user interface that at first may seem overly complicated and downright annoying. (Honestly, how many security questions does one person really need to answer in a day??) But don't worry, with a little use and a few shortcuts, you will find that Vista does make your life a little easier. Below are some common shortcuts to help you in your everyday use of Vista.



"WinKey"

Press WinKey + M at the same time to minimize all windows and take you back to your desktop. To reverse this, press the WinKey + Shift + M and all the windows will maximize.

For laptop users, pressing WinKey + X will bring up a utility that will allow you to manage laptop-specific items such as power management, sync settings, screen rotation, and more.

When you place items in the **Quick Launch bar** (the little icon bar next to the Start button), Windows Vista automatically assigns shortcut key combinations to them. Just hit the WinKey plus a number key corresponding to the icon's position in the bar. For instance, to launch the third application in the Quick Launch bar, press WinKey + 3. Don't see the bar? Right-click an empty part of the Taskbar and select it under the *Toolbars* menu.

Restore your file – Vista creates "shadow copies" of your files daily; if you accidentally overwrite an Office file like Word or Excel, you can right-click on the item and choose the "restore to earlier version" option.

Start Menu Search and Launch - Dubbed *Instant Search* by Microsoft, this new feature adds a search box to the Windows Start menu for quick searching and launching of documents and applications. You no longer need to open menu after menu to click on an item. Simply type the name of that item into the search box and click on the results that appear directly above it.

CIMS Featured Cemetery

By: Rachel Tygum

Roselawn Cemetery, MN

Roselawn Cemetery is a 160-acre cemetery located in Roseville, Minnesota and has been using CIMS since 2003. Noticing the trend towards cremation, Superintendent Larry Hudella wanted to create memorable places for families to come and visit the cremated remains of their loved ones. This led to the creation of an *ossuary* (pictured to the right) and a solid bronze *niche wall* in a new mausoleum (pictured below). The ossuary is surrounded by a circular walkway lined with granite blocks on which the names and dates of the interred are listed. The walkway leads to a central bronze sculpture featuring a sphere with handprints of all ages and sizes cast into it. As the cremated remains are placed in the sphere, a melody is played by a series of tuning forks while the remains descend into the earth below.



The new mausoleum, constructed from limestone and featuring a slate roof, contains the bronze niche wall showing a northwoods scene of loons swimming in a peaceful lake. The wall, a work of art in itself, contains 180 niche doors that can hold a total of 360 cremains. The side walls are done in granite and can hold another 48 full-size body interments on each side. Mr. Hudella was told by the bronze company (Matthews Bronze) that this is the largest sculptured bronze wall they have ever made, and could be the largest in the world!

One question (and many answers) with Larry Hudella:

Q: What do you like about CIMS?

A: "(1) I like how you can color up the map and see what's for sale – that sure makes finding graves for people that want to get close to someone very easy. (2) I was under the gun the other day to get a distance for someone, and a coworker went on CIMS and got it from the program. It sure helped out! (3) The support you guys give is very important to me. Always fast and right on the money and you manage to do it without making us look unintelligent! THANKS!"



Underground Mapping/Locating

By: JB Burns (VUI)

Virtual Underground Inc. (VUI) brings underground mapping to cemeteries. New 3D Array Ground Penetrating Radar (GPR) technology makes finding old interments possible and mapping entire cemeteries efficient. VUI can locate the full range of burials – direct burial, liners, vaults and lawn crypts. The results are presented as a standard map with each burial outlined showing location, orientation and depth. VUI's maps also show surface features such as pins, headstones, building lines, sidewalks and roads as a reference for the underground map.

Data is collected non-invasively and unobtrusively by a small crew running the radar system over the area of interest. This data is then processed in VUI's office to locate individual interments. The array radar creates a "picture" of the underground similar to medical imaging such as a CAT scan or MRI. Burials or other underground features can then be outlined and placed on a map.

Providing an accurate map of the underground, Virtual Underground can help cemeteries where records have been lost or are inaccurate. The service can find misplaced vaults or unknown burials, the boundaries of historic burial grounds, as well as areas without burials for added inventory. These services can significantly improve the operation of a cemetery.

Additionally, VUI can find bedrock, buried rocks, the water table and utility lines on your property making it possible to open up new land for development or avoid costly underground obstructions.

Areas can be surveyed in stages over a period of time and integrated together to form a seamless map of the site. If you need an immediate answer about a single section (or even an individual plot) in your cemetery, VUI can provide it. Later, a more comprehensive picture of your facility can be created by combining these individual surveys and merging them with any existing records that are available.

Benefits for cemeteries:

- Permanent map
- Accurate
- Non-invasive
- Cost effective
- Sees all types of vaults/liners
- Sees direct burials



Continued on next page

Road Trips

Over the next few months, CIMS Regional Sale Representative Deb Karpen, will be taking some “road trips” through Iowa, Nebraska and Washington. If you would like to arrange a visit to your location, please contact Deb at 800-332-7532 extension 296.



Upcoming Shows

Update — The Central States Cemetery Association meeting to be held in Chicago on August 14 - 15, 2008, has been **cancelled**. No other details are currently available.

Save Money on Your Maintenance Program Using Client Referrals

Word of mouth is the best source of information. We have always been very thankful to our CIMS users for telling others about our cemetery software. Any CIMS *Light* or CIMS software user who refers another cemetery is eligible to receive a bonus. After Ramaker & Associates receives a newly signed contract, **the referring cemetery will be given a \$250 credit**. This amount will go towards their own Maintenance and Technical Support Contract for one year.

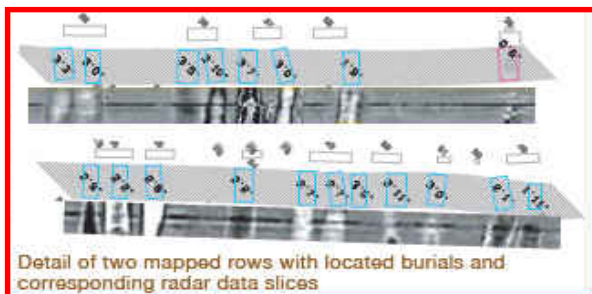


A referral form must be returned with the order form or signed contract. You can obtain a copy of the referral form via our website at www.1cims.com in the “What’s New” section or by calling us. Thanks again for the help!

Underground mapping ...continued

For more information on Ground Penetrating Radar visit <http://www.cemetery.virtualug.com>; call 404.315.4828; or email info@vurtialug.com.

Virtual Underground maps can be integrated with CIMS software. Call Brandon Finley at 800-332-7532 to learn more.



Detail of two mapped rows with located burials and corresponding radar data slices

Weather

By: Rachel Tygum

In June 2008, several days of heavy rain in the Midwest turned into weeks of flooding and water damage for several states. While the CIMS headquarters at Ramaker & Associates in Wisconsin did not suffer any damage, one of our clients located in Franklin, Indiana could not say the same. Mark Webb of Greenlawn Cemetery has been gracious enough to share his story and some pictures.



The day of June 7, 2008, saw about 9.5 inches of rain in less

than 9 hours, and the results were devastating. Mr. Webb states that 80% of his cemetery was under water, up to 8 ft. deep in some places. Over 100 monuments had been toppled over like matchsticks (photo above), but thankfully they did not lose a single vault. The office was flooded with over 2.5 ft. of water, which ruined three computers and anything else near the floor (photo to the right). The



maintenance building was deluged under 5.5 ft. of water, which ruined weed trimmers, seven mowers, a tractor, leaf machines, and the Crown Victoria used to lead funerals and help with countless other things. To make things worse, the road had washed out in three different places (photo below).

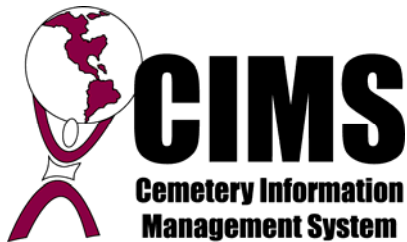
Mr. Webb called Ramaker & Associates to let them know of the damage, and was relieved to know that they had saved copies of his owner records and could provide him with those and fresh copies of his maps. The maps were close to being finalized when the floods managed to destroy just about everything. The amazing thing is that



Greenlawn Cemetery was able to hold their first funeral just one week after the devastation, although the flooding is something that they would like to forget. After a month they are still reeling from the

damage, yet Mr. Webb states that he is “so looking forward to getting back in business and having the CIMS program up and running!”

This situation brings up an important reminder to keep back-up copies of your CIMS data off-site! On just a single CD you can save all of your cemetery records, as well as scans of burial sheets, lot owner cards, and obituaries. As we learned with Hurricane Katrina, you never know when the next natural disaster will hit. Use CIMS to safeguard your records!



Ramaker & Associates, Inc.
1120 Dallas Street
Sauk City, WI 53583

Phone: 800-332-7532
Fax: 608-643-7999
E-mail: cims@ramaker.com
Web: www.ramaker.com

**ARE YOUR RECORDS SAFE FOR
THE NEXT GENERATION?**

Software Tips

"Unknown" Section

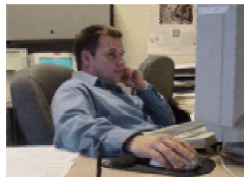
What do you do when you have information regarding a burial in your cemetery, but don't have an exact grave location to tie it to? This is a problem that several cemeteries have approached the CIMS team with, as they'd like to be able to search for that burial in CIMS.

The answer is the creation of an Unknown Section. This section lies off to the side of the actual cemetery on the screen, and is a large open area specifically reserved for burials with an unknown or incomplete location. The size of the Unknown Section is determined by the cemetery and is based on how many unknown burials they have. Once burials are placed in the Unknown Section the burial name can be searched as usual. If the exact location is determined in the future the burial can be moved. This eliminates the need to match every single burial record to a grave on the map before migrating your data into CIMS. This section is mapped out by Ramaker & Associates for CIMS, while CIMS *Light* users can create this section on their own.

Maintenance Program

Included with the purchase of any CIMS or CIMS *Light* software, is 120 days of free technical support and upgrades. You then have the option of participating in the CIMS Maintenance Program. Have the security of knowing that you will be able to have your questions answered as often as you need - wherever you are.

If we are not able to help you solve problems over the phone or by e-mail, we are also able to connect directly to your computer via the Internet. All updates to the software are received free of charge while enrolled in the Maintenance Program. Renewal invoices are sent annually. Remember, you can sign up for the Maintenance Program at any time.



Staff Profile

Rebecca Priem

Rebecca joined Ramaker & Associates more than three years ago and works as a mapping technician on the GIS/CIMS Team.



She has provided CAD services for several cemeteries throughout the United States. Her experience in a variety of disciplines and her attention to detail, result in accurate projects completed in a timely manner. Rebecca is also well known for her beautiful hand drawn renderings. Her artistic talent benefits many areas of our company.

Rebecca has a B.A. in Psychology with a minor in art. She also holds an A.A. in Interior Design.

In her free time, Rebecca enjoys working on home improvement projects, playing sand volleyball, painting or creating art/craft projects, and spending time with friends and family.

Welcome to Some of Our Newest Clients

CIMS *Light*

- Rose Lawn Memorial Park (TX)
- Six Mile Cemetery Assoc. (IN)
- Evergreen Cemetery Park (SC)
- St. Patrick Catholic Church (IL)
- Walnut Hill Cemetery (OH)

CIMS

- St. Peter's Lutheran Church (PA)
- Union Cemetery Assoc. (MN)
- Hillcrest Cemetery (ID)
- Temple Israel Memorial Park (NY)
- Zion Evangelical Lutheran (OH)
- Rose Hill Cemetery (KS)
- Village of Northbrook (IL)
- City of Urbana (OH)
- Portage Township (OH)
- Town of Westlake (TX)
- Shinnston Masonic Cemetery (WV)
- Mt. Carmel Cemetery (IL)
- Ada Cemetery (MN)
- Grandview Union Cemetery (OH)

